

RESOLUTION 2022 262

BEFORE THE BOARD OF COMMISSIONERS OF BENTON COUNTY, WASHINGTON

IN THE MATTER OF COUNTY PLANNING RE: COMPREHENSIVE PLAN AMENDMENT APPLICATION CPA 2022-001 BY VICKI BROCK MODIFYING THE COMPREHENSIVE LAND USE DESIGNATIONS OF PARCELS 123802012006002; 123802012006001; 123802012157002; 123802012157001; 123802000014000; AND 123802000017000 FROM RURAL INDUSTRIAL TO RURAL REMOTE WITH THESE CHANGES REFLECTED ON APPENDIX A - MAP FOLIO, *FIGURE 5 – 2017 PERIODIC UPDATE LAND USE DESIGNATION MAP.*

WHEREAS, Benton County adopted its current Comprehensive Plan in 2018 with the completion of its required periodic update process; and,

WHEREAS, pursuant to RCW 36.70A.106, Benton County provided notice of intent to the Washington State Department of Commerce to adopt a proposed comprehensive plan amendment under the Growth Management Act; and,

WHEREAS, the Benton County Planning Commission did conduct an open record hearing for CPA 2022-001 on March 8, 2022 to consider the application by Vicki Brock and considered all evidence and testimony submitted at the public hearing and after discussion, voted to forward the proposed amendment(s) to the Board of County Commissioners with a positive recommendation; and,

WHEREAS, the Planning Commission recommendation of approval is set forth in the Planning Commission's Recommendation, Findings of Fact and Conclusions incorporated hereby by reference (BCCM 1.6), that are found in File # CPA 2022-001, located in the Planning Division; and,

WHEREAS, Notice of Open Record Hearing before the Board of County Commissioners was published in the Prosser Record Bulletin on March 30, 2022; put on the website and sent to the applicants and interested parties on March 25, 2022, as noted in the file maintained in the Planning Division; and,

WHEREAS, the Board of County Commissioners did conduct an open record hearing on Tuesday, April 12, 2022, at 9:00 a.m. in the Commissioners Meeting Room, Benton County Courthouse, Prosser Washington to consider the above proposed application for a comprehensive plan amendment; and,

WHEREAS, the Board did review the Planning Commission record, staff recommendations, the testimony, and the proposed ordinance; and,

WHEREAS, after consideration of the above-mentioned request and review of the Planning Commission record, staff analysis and memos, and all written and oral

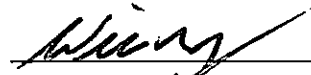
comments submitted at the public hearing, the Board of County Commissioners did adopt the Planning Commission's Findings of Fact and Conditions of Approval as their own (which are kept in File No. CPA 2022-001 in the Planning Division records) and it appears to be in the best interest of the public to approve Planning application CPA 2022-001, an application for a comprehensive plan amendment; NOW, THEREFORE

BE IT RESOLVED that the application for Comprehensive Plan Amendment CPA 2022-001 amending the Comprehensive Plan Land Use Designations of parcels 123802012006002; 123802012006001; 123802012157002; 123802012157001; 123802000014000; and 123802000017000 from Rural Industrial to Rural Remote with the change in Land Use Designations reflected on *Appendix A – Map Folio Figure 5 - 2017 Periodic Update Land Use Designations Map (BCCM 1.3)* of the Benton County Comprehensive is hereby approved, Comprehensive Plan Amendment CPA 2022-001.

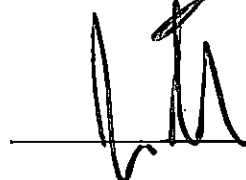
Dated this 12th day of April 2022.



Chairman of the Board



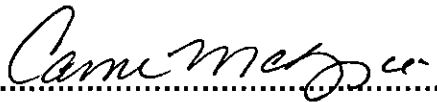
Member



Member

Constituting the Board of County
Commissioners of Benton County
Washington.

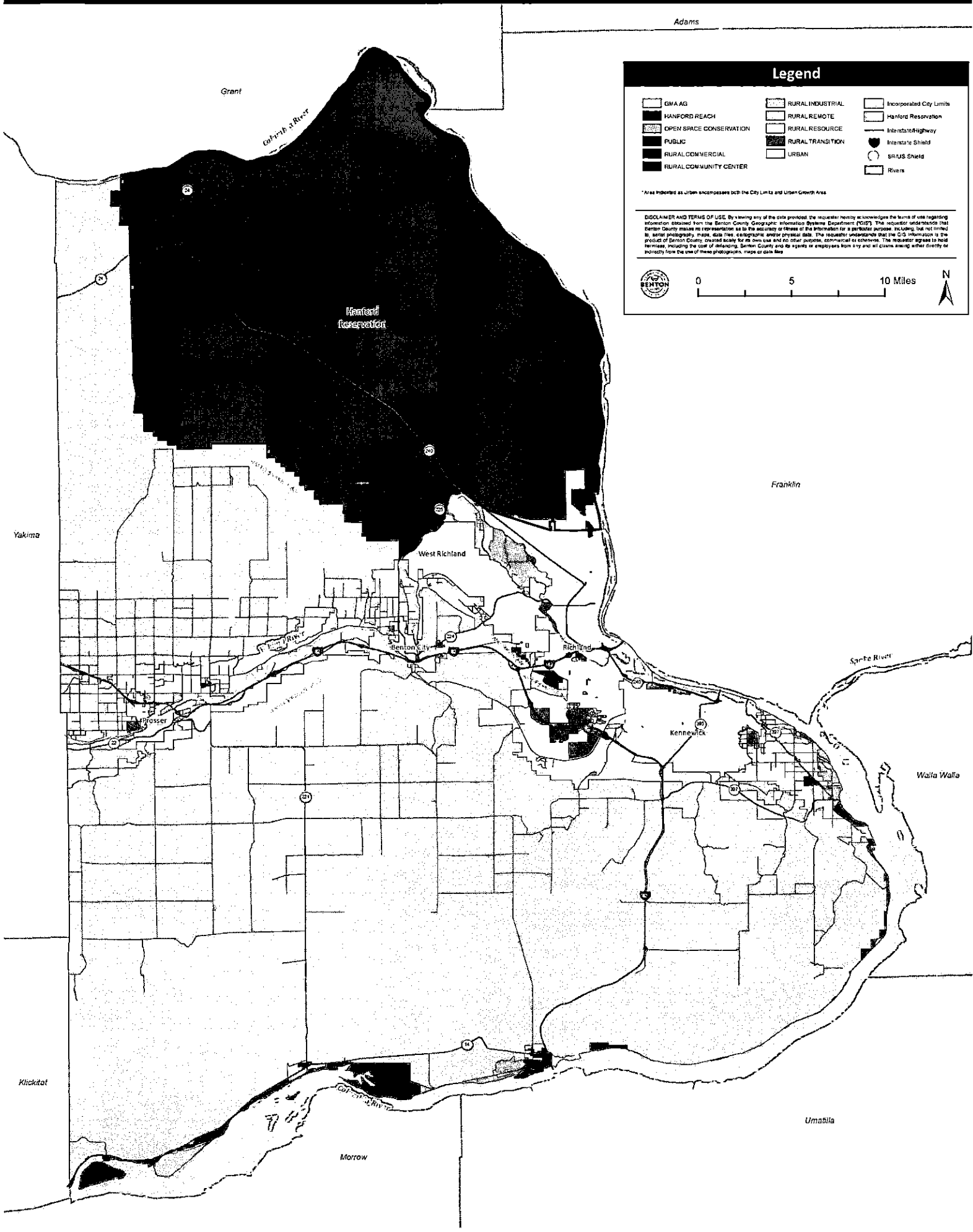
Attest.....

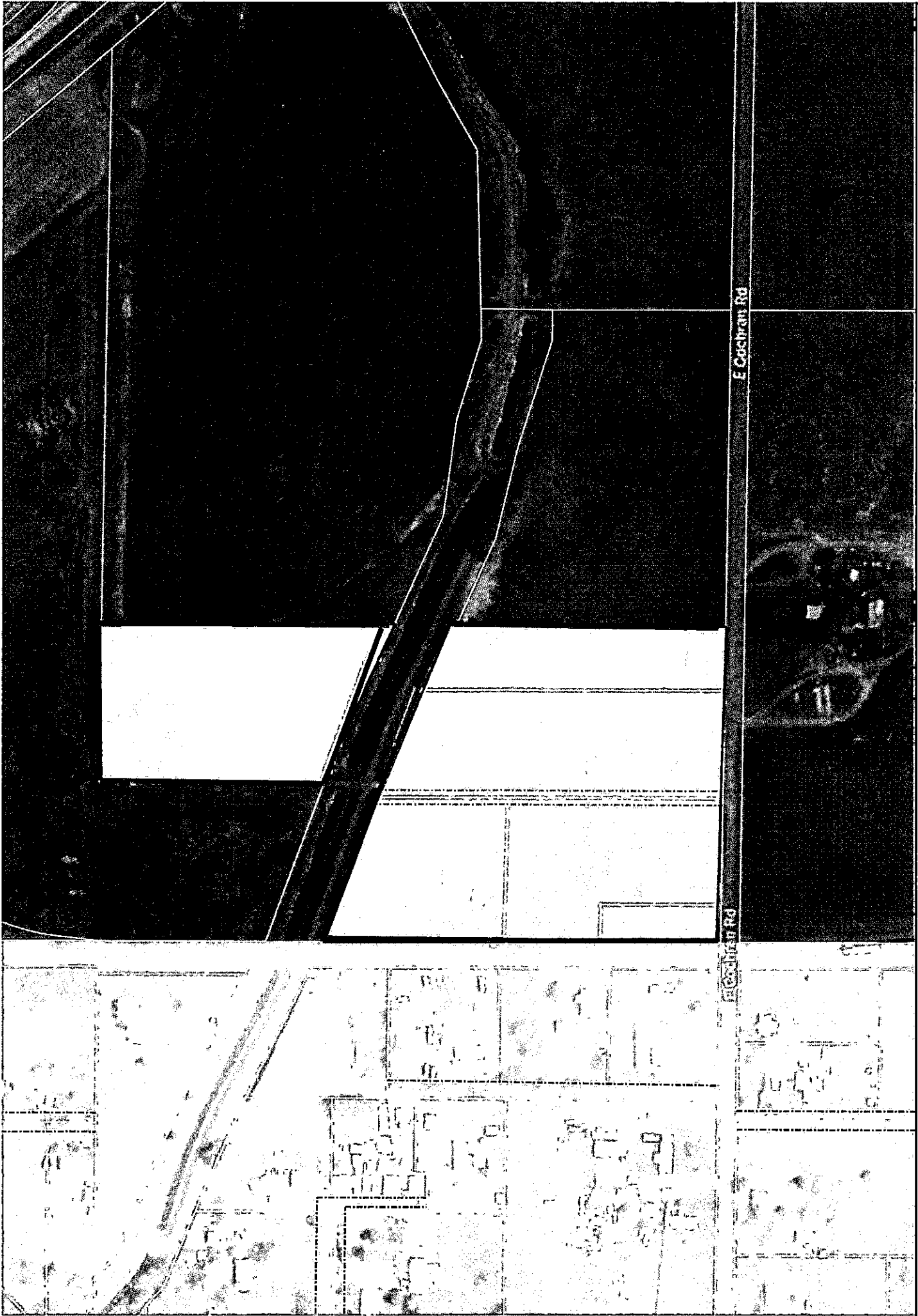


Clerk of the Board

MLC

Figure 5: Future/Proposed Land Use Designations Map - Benton County Comprehensive Plan Update Appendix A: Map Folio /April 12, 2022





E Cochran Rd

E Cochran Rd

